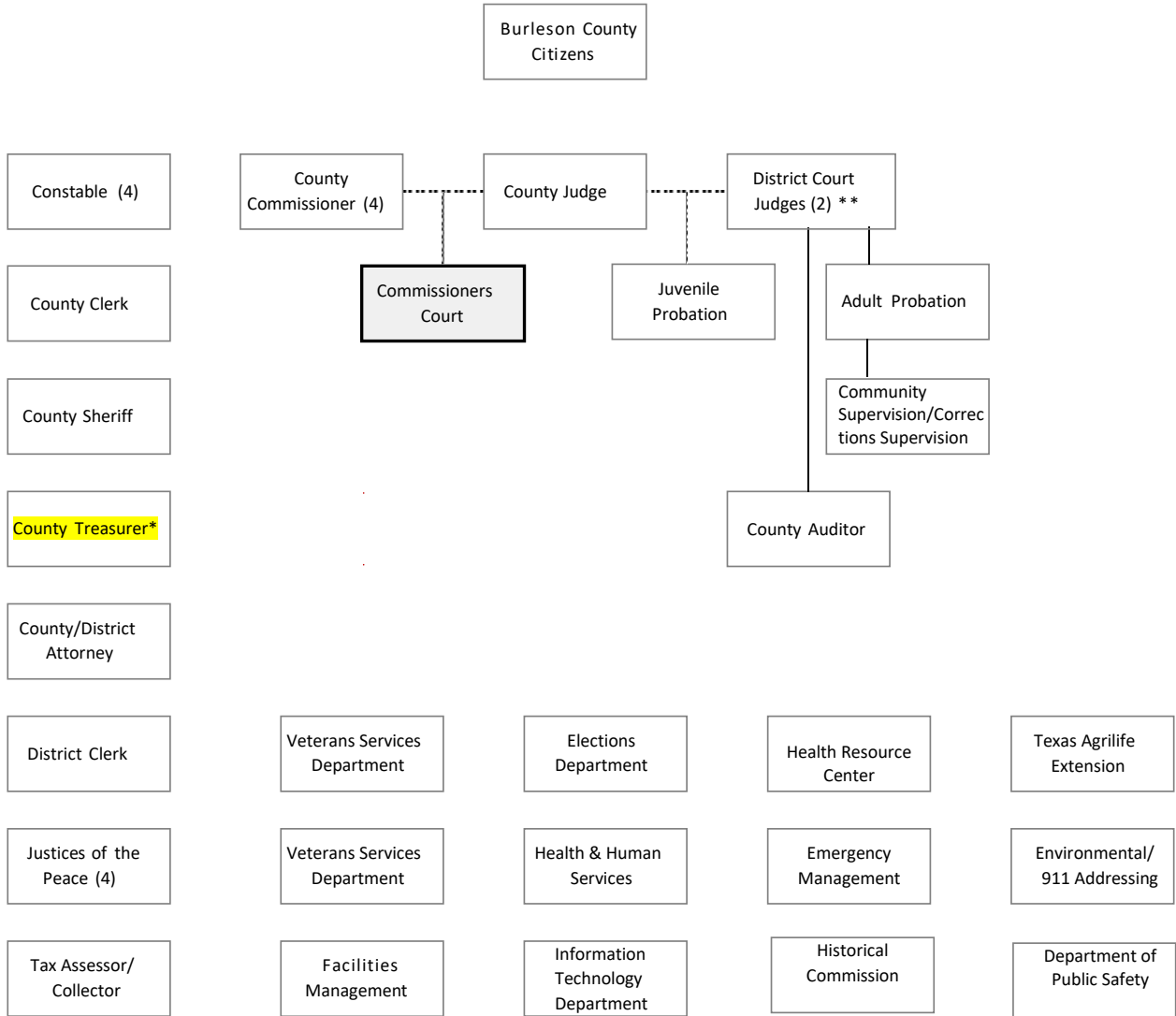


# BURLESON COUNTY, TEXAS ADMINISTRATIVE POLICY MANUAL

Procedure:  
Page:  
Date Authorized:  
Supersedes:

T6NDP.0  
8 of 40  
10/01/2024

## COUNTY ORGANIZATIONAL CHART



\*\* State appointed judges

\* Title VI/Nondiscrimination Coordinator